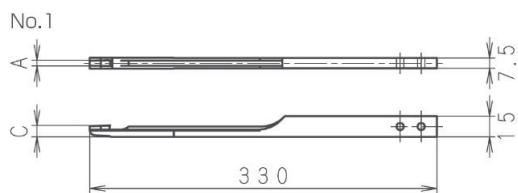


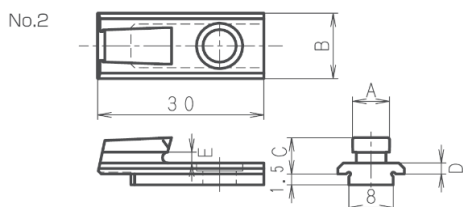
Key Seater Cutters

Standard stock is SKH55 for tolerance F7 and Js9. Special dimensions are available.

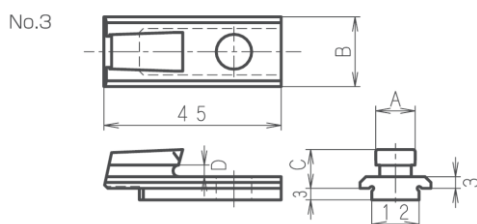


A list of model numbers

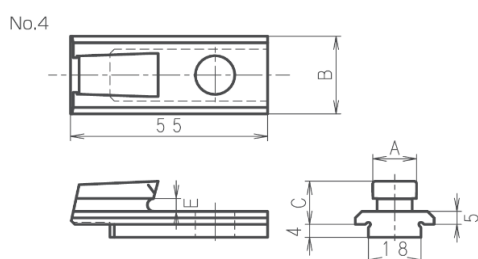
Model Numbers	A	C
No 1-5	5	7.5
No 1-6	6	8.5
No 1-7	7	8.5
No 1-8	8	10



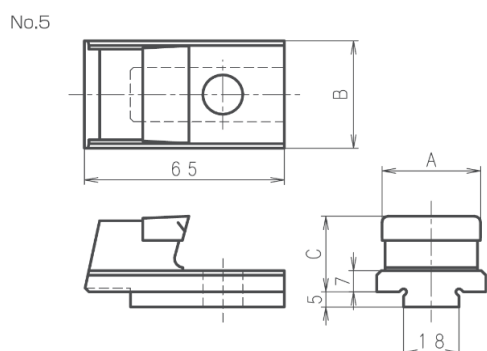
Model Numbers	A	B	C	D	E
No 2-7	7	12	7.3	2.3	2
No 2-8	8	12	7.3	2.3	2
No 2-10	10	13	8.5	2.5	3
No 2-12	12	13	8.5	2.5	3



Model Numbers	A	B	C	D
No 3-10	10	18	10	4
No 3-12	12	18	10	4
No 3-14	14	21	13	6
No 3-15	15	21	13	6
No 3-16	16	21	13	6
No 3-18	18	21	13	6
No 3-20	20	21	13	6



Model Numbers	A	B	C	E
No 4-18	18	25.5	17	8
No 4-20	20	25.5	17	8
No 4-22	22	25.5	17	8
No 4-24	24	25.5	17	8
No 4-25	25	25.5	17	8
No 4-28	28	32	20	10
No 4-32	32	37	23	10
No 4-35	35	37	23	10
No 4-36	36	37	23	10



Model Numbers	A	B	C
No 5-28	28	35.5	25
No 5-32	32	35.5	25
No 5-35	35	35.5	25
No 5-36	36	42.5	29
No 5-38	38	42.5	29
No 5-40	40	42.5	29
No 5-42	42	42.5	29
No 5-45	45	48	32
No 5-50	50	48	32

High Speed Steel Tool Bits

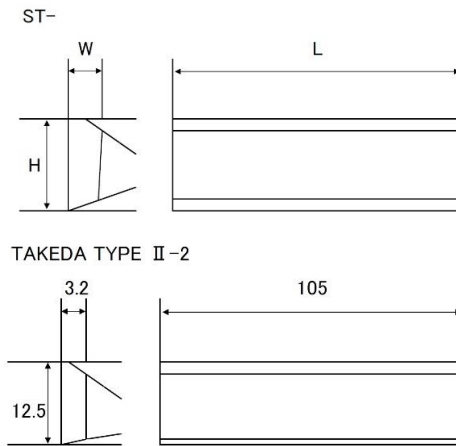
ASP60 (Powdor High Speed Steel)--- Those are powder High Speed Steels of high Co with excellent high temperature hardness and abrasion resistance

Sharp Cut(SKH57) --- Those are molybdenum type High Speed Steels of high Co and high V with excellent abrasion resistance

※ Special dimensions are available

Special tool bits with trapezoidal section (Outer dimension) W×H×L

Product name		ASP60	SharpCut
Parting tool ST-00	(2.4×10×100)	—	○
Parting tool ST-10	(2.4×13×115)	—	○
Parting tool ST-20	(2.4×16×127)	—	○
Parting tool ST-30	(3.2×19×127)	—	○
TAKEDA TYPE II-2	(3.2×12.5×105)	○	○

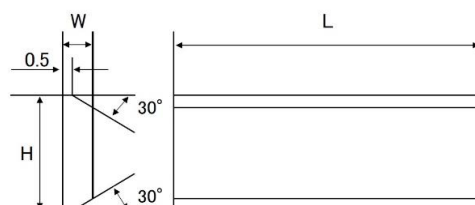


Rectangular tool bits (dimension by inches)

Size	ASP60	SharpCut
1/8×1/2×3.1/2	—	○
1/8×1/2×8	—	○
1/8×5/8×8	—	○
4×1/2×8	—	○
4×5/8×4.1/2	—	○
4×5/8×8	—	○
3/16×1/2×8	—	○
3/16×5/8×8	—	○
3/16×3/4×5	—	○
3/16×3/4×8	—	○
1/4×3/8×6	—	○
1/4×3/8×8	—	○
1/4×1/2×8	○	○
1/4×5/8×8	—	○
1/4×3/4×8	—	○
5/16×1/2×8	○	○
3/8×1/2×6	—	○
3/8×1/2×8	○	○
3/8×5/8×8	—	○
6×11×200	—	○

Tool bits with trapezoidal section (Outer dimension) W×H×L

Product name		ASP60	SharpCut
#1	(3.2×12.7×90)	○	○
#1×8	(3.2×12.7×200)	—	○
#2	(4.0×15.9×115)	○	○
3.2×#2	(3.2×15.9×115)	—	○
#2×8	(4.0×15.9×200)	—	○
3.2×#2×8	(3.2×15.9×200)	—	○
#3	(4.8×19×127)	○	○
#3×8	(4.8×19×200)	—	○
#4	(6.4×25.4×165)	○	○



Conversions (inch -mm)

inch	mm
1/8	3.175
3/16	4.763
1/4	6.350
5/16	7.938
3/8	9.525
1/2	12.700
5/8	15.875
3/4	19.050
1"	25.400

Square tool bits (dimension by mm)

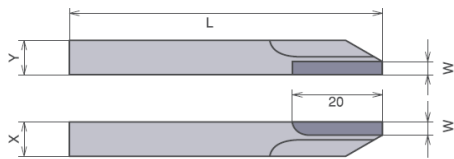
Size	ASP60	SharpCut
5×50	○	○
5×63	○	○
5×80	○	○
5×100	○	○
5×160	○	○
6×63	○	○
6×80	○	○
6×100	○	○
6×125	○	○
6×150	○	○
6×160	○	○
6×200	○	○
8×63	○	○
8×80	○	○
8×100	○	○
8×160	○	○
8×200	○	○
10×63	○	○
10×75	○	○
10×80	○	○
10×100	○	○
10×150	○	○
10×160	○	○
10×200	○	○
12×63	○	○
12×100	○	○
12×150	○	○
12×160	○	○
12×200	○	○
14×100	○	○
14×125	○	○
14×160	○	○
14×200	○	○
16×160	○	○
16×200	○	○
20×160	—	○
20×200	○	○
25×160	○	○
25×200	○	○

Square tools bits (dimension by inches)

Size	ASP60	SharpCut
3/16×2.1/2	—	○
1/4×2.1/2	○	○
1/4×3	—	○
1/4×4	○	○
1/4×6	○	○
1/4×8	○	○
5/16×2.1/2	○	○
5/16×4	○	○
5/16×6	○	○
5/16×8	○	○
3/8×3	○	○
3/8×4	○	○
3/8×6	○	○
3/8×8	○	○
1/2×4	○	○
1/2×6	○	○
1/2×8	○	○
5/8×5	○	○
5/8×6	○	○
5/8×8	○	○
3/4×5	○	○
3/4×6	○	○
3/4×8	○	○
1" ×8	○	○

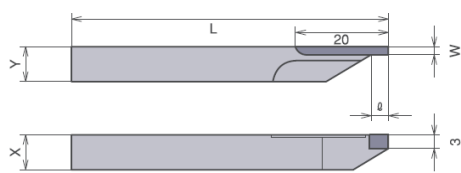
Bits for Precision Automatic Lathes

Materials : F1 (Ultrafine particles)



Offset tool bits (mm)

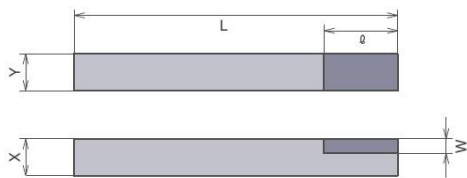
No	X	Y	L	W
1095	9.5	9.5	150	3
1100	10.0	10.0	150	3
1120	12.0	12.0	150	3



Tipped tool bits (mm)

No	X	Y	L	W	l
2080	8.0	8.0	150	2	3.5
2095	9.5	9.5	150	2	3.5
2100	10.0	10.0	150	2	3.5

*This diagram shows right hand cutting. Instruct L or R.



Flat tool bits (mm)

No	X	Y	L	W	l
3080	8.0	8.0	150	3	15